

SACRAMENTO, CALIFORNIA

NWC El Camino Avenue & Evergreen Street

FOR SALE
\$575,000

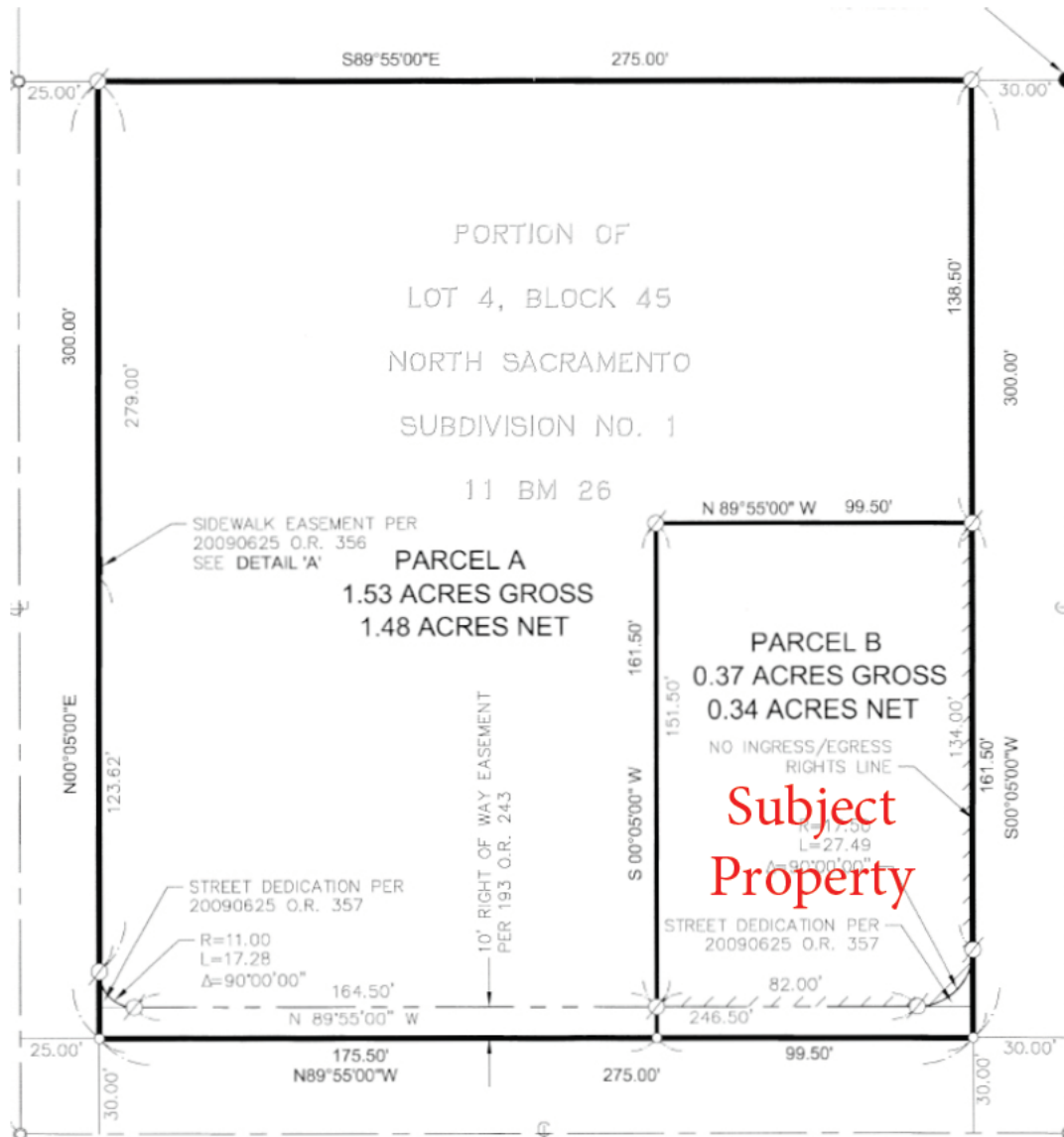
PRIME CORNER



825 K Street, 3rd Floor, Sacramento, CA 95814
T 916 . 442 . 4600 F 916 . 442 . 6313

SACRAMENTO, CALIFORNIA

NWC El Camino Avenue & Evergreen Street



PRIME CORNER

PROJECT SUMMARY

- Approximately 17,000 SF
- All on and off site work completed including parking lot & landscaping
- \$250,000 of site work completed
- Under served Trade Area
- 2016 Population (3 Miles): 150,710
- 2009 Est. Daily Traffic: 65,000 CPD
- 2016 Average Household Income (3 Miles): 56,497
- Monument/Pylon signage available



825 K Street, 3rd Floor, Sacramento, CA 95814
T 916 . 442 . 4600 F 916 . 442 . 6313

SACRAMENTO, CALIFORNIA

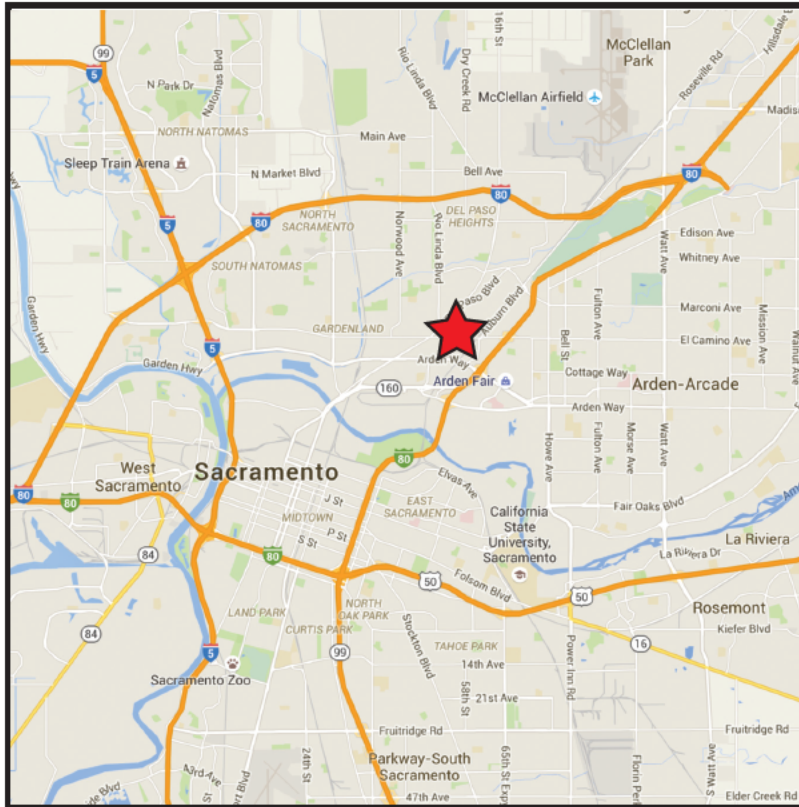
NWC El Camino Avenue & Evergreen Street



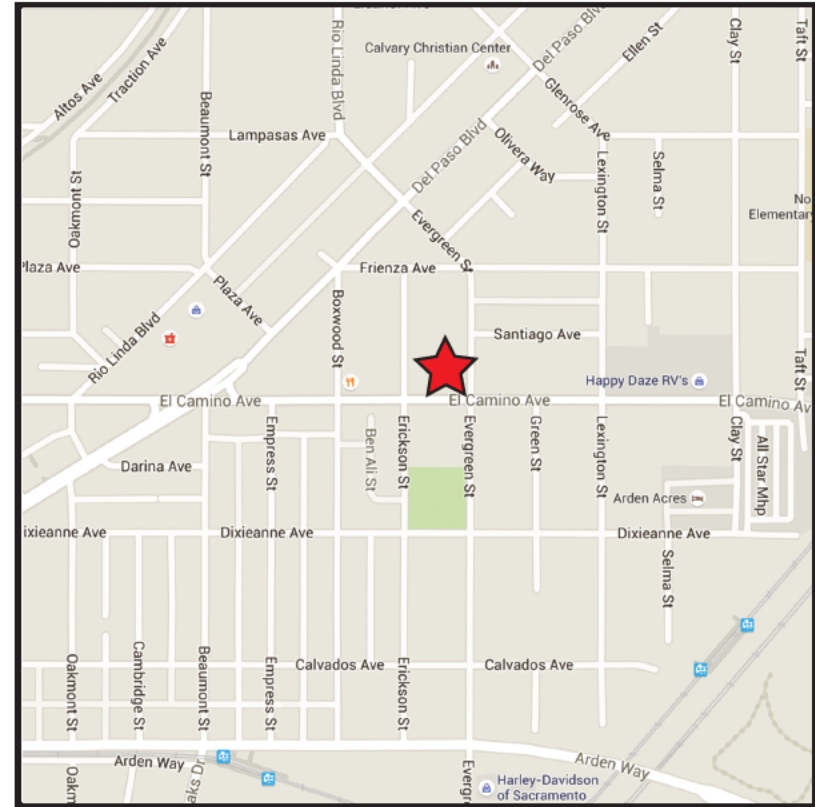
SACRAMENTO, CALIFORNIA

NWC El Camino Avenue & Evergreen Street

AREA MAP



LOCATION MAP



(C) 2015 PETROVICH DEVELOPMENT COMPANY, LLC. This information has been obtained from sources believed reliable. We have not verified it and make no guarantee, warranty, or representation about it. Any projections, opinions, or estimated used are for example only and do not represent the current or future performance of the property. You and your advisors should conduct a careful, independent investigation of the property to determine to your satisfaction the suitability of the property for your needs. PETROVICH DEVELOPMENT COMPANY and the PETROVICH DEVELOPMENT COMPANY logo are service marks of PETROVICH DEVELOPMENT COMPANY, LLC. and/or its affiliated or related companies in the United States and other countries. All other marks displayed on this document are the property of their respective owners. Photos herein are the property of their respective owners and use of these images without the express written consent of the owner is prohibited. 70115159-99981



825 K Street, 3rd Floor, Sacramento, CA 95814
T 916 . 442 . 4600 F 916 . 442 . 6313